

HISTORY (027)
Class XII: 2024-25
SAMPLE QUESTION PAPER

Time Allowed: 3hrs

Maximum Marks:80

General Instructions:

1. Question paper comprises five Sections – A, B, C, D and E. There are 34 questions in the question paper. All questions are compulsory.
2. **Section A** – Question 1 to 21 are MCQs of 1 mark each.
3. **Section B** – Question no. 22 to 27 are Short Answer Type Questions, carrying 3 marks each. Answer to each question should not exceed 60-80 words.
4. **Section C** - Question no 28 to 30 are Long Answer Type Questions, carrying 8 marks each. Answer to each question should not exceed 300-350 words.
5. **Section D** – Question no.31 to 33 are Source based questions with three sub questions and are of 4 marks each.
6. **Section-E** - Question no. 34 is Map based, carrying 5 marks that includes the identification and location of significant test items. Attach the map with the answer book.
7. There is no overall choice in the question paper. However, an internal choice has been provided in few questions. Only one of the choices in such questions have to be attempted.
8. In addition to this, separate instructions are given with each section and question, wherever necessary.

SECTION – A
OBJECTIVE TYPE QUESTIONS (21 x 1 = 21)

Marks

- | | | |
|----|--|---|
| 1. | Which of the following options accurately describes the significance of the Sangam Age in the context of literature? | 1 |
| | A. It marked the introduction of Sanskrit literature in South India.
B. It was a period of decline in literary activities in Tamil Nadu.
C. It witnessed the flourishing collection of ancient Tamil literature.
D. It was characterized by the dominance of Greek literature in India. | |
| 2. | To which one of the following dynasties did raja Gotami-puta Siri-Satakani belong? | 1 |
| | A. Vakataka
B. Satvahana
C. Kushan
D. Gupta | |
| 3. | Two statements are given in the question below as Assertion A and Reason R. Read the statements and choose the appropriate option. | 1 |
| | Assertion(R): Recovering artefacts is merely the initial step in the archaeological process. | |



Reason(R): Archaeologists employ various methods such as classification based on material and function, analysis of contextual clues, and reliance on indirect evidence to understand the significance and purpose of artefacts.

Options:

- A. Both (A) and (R) are correct and (R) is the correct explanation of (A)
- B. Both (A) and (R) are correct, but (R) is not the correct explanation of (A)
- C. (A) is correct, but (R) is not correct
- D. (R) is correct, but (A) is not correct.

4. **Consider the following statements regarding Buddhism and choose the correct option.** 1
- I. The concept of Bodhisattva is central to Hinayana sect of Buddhism.
 - II. Bodhisattva is a compassionate one on his way to enlightenment.
 - III. Bodhisattva achieve nibbana for personal salvation.

Options

- A. II & III
- B. II & III
- C. I & II
- D. I & III

5. **Match the column I with column II regarding the archaeologist who worked in the exploration of Indus valley and choose the correct option.** 1

Column I		Column II	
a	Daya Ram Sahni	i	Authored “Mohenjodaro & the Indus Civilisation”
b	Rakhal Das Banerji	ii	Discovered seals at Harappa
c	John Marshall	iii	Found seals at Mohenjodaro
d	R.E.M. Wheeler	iv	Authored “Ancient India”

Options

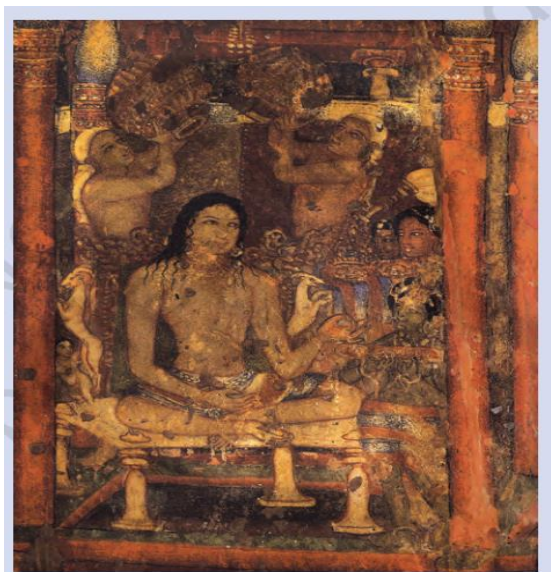
	(a)	(b)	(c)	(d)
A.	(iii)	(i)	(ii)	(iv)
B.	(iii)	(iv)	(i)	(ii)
C.	(i)	(ii)	(iii)	(iv)
D.	(i)	(ii)	(iv)	(iii)

6. **Identify the ruler of the ancient India with the help of following information:** 1

He was a prominent Shaka ruler.
He rebuilt Sudarshana Lake in the second century CE.
He showcased his engagement with Sanskrit traditions.

- A. Vikramaditya II
- B. Bhaskaravarman
- C. Bimbisara
- D. Rudradaman

7. Identify which of the following options refers to the ancient cave painting given below? 1



Source -NCERT

- A. Ajanta Cave Paintings
- B. Bagh Cave Paintings
- C. Sittanavasal Cave Paintings
- D. Ellora Cave Paintings

NOTE: The following question is only for the visually impaired candidate in lieu of Q7

In which of the following regions is the Kailasha temple located?

- A. Rajasthan
- B. Maharashtra
- C. Madhya Pradesh
- D. Uttar Pradesh

8. Which of the following skills can be identified from Al-Biruni's writings? 1

- A. Proficiency in diplomacy and political negotiation.
- B. Fluency in multiple languages and a broad intellectual curiosity.
- C. Expertise in military strategy and warfare tactics.
- D. Exceptional talent for storytelling and vivid descriptions.

9. Which of the following statements is incorrect about Andal? 1

- A. Andal was a woman Alvar, the most striking features of her compositions were widely sung.
- B. Andal was a woman Nayanar, she incorporated the prevailing caste system in the society.
- C. Andal saw herself as the beloved of Vishnu; her verses express her love for the deity.
- D. Andal saw herself as the beloved of Krishna; her verses express her love for the deity.



10. Imagine you are analysing a historical document from the Vijayanagar Empire. Which of the following documents would be most helpful in understanding the relationship between the empire and religious institutions? 1
- A. A military chronicle detailing the conquests of a Vijayanagar rulers.
B. A record of diplomatic exchanges with traders and foreign ambassadors.
C. A legal code outlining the rights and responsibilities of urban classes.
D. An imperial decree granting land or privileges to a sacred organization.
11. Match the column I with column II regarding the travellers who visited the Vijayanagar empire and choose the correct option.: 1

Column I		Column II	
a	Nicolo de Conti	i	Ambassador of Persia visited in the 15th century.
b	Abdur Razzaq	ii	Italian trader who visited in the 15th century.
c	Afanasii Nikitin	iii	Portuguese traveller who visited in the 16 th century.
d	Duarte Barbosa	iv	Merchant from Russia who visited in the 15 th century.

Options:

- (a)

(b)

(c)

(d)

A. (iii) (i) (ii) (iv)
B. (iii) (iv) (i) (ii)
C. (i) (ii) (iii) (iv)
D. (ii) (i) (iv) (iii)
12. Which of the following developments significantly contributed to the increased flow of silver bullion into India through trade with Europe during the 16th-18th centuries? 1
- A. The rise of the Ottoman Empire in Asia
B. The opening of the new world through voyages
C. The Ming Dynasty's expansion into Southeast Asia
D. The decline of the Safavid Empire in Asia
13. How did the compilation of the Ain-i Akbari contribute to Emperor Akbar's vision of governance? Choose the best suitable option from the following. 1
- A. By emphasizing military strategies for territorial expansion.
B. By documenting religious rituals and practices across the empire.
C. By providing information on administrative and cultural traditions.
D. By focusing on trade routes and economic policies.
14. What insights did Francois Bernier provide about the economic structure of Mughal India? Choose the best suitable option from the following. 1
- A. The prevalence of private land ownership and equitable distribution of wealth.
B. The dominance of state-controlled resources and limitations on private property.
C. The absence of trade networks and economic isolation from global markets.
D. The reliance on foreign investments and the absence of indigenous industries.

15. **Compare and contrast the impacts of the American Civil War on cotton production in India and the United States. Choose the best suitable option from the following.** 1
- A. Both countries experienced a decline in cotton production due to the war.
 - B. India's cotton production increased while the United States experienced a decline.
 - C. The United States saw increased cotton production while India's remained stagnant.
 - D. Both countries saw a surge in cotton exports during the war period.
16. **Why did the rebellion in Awadh become a symbol of resistance against British rule? Choose the best suitable option from the following.** 1
- A. Due to the region's economic prosperity under native rule
 - B. Due to the displacement of Nawab Wajid Ali Shah and taluqdars
 - C. Due to favourable land revenue policies towards the peasantry
 - D. Due to Awadh 's central position for organizing rebel forces.
17. **Which of the following represents the correct chronological order of events related to agrarian developments in India during the 19th century?** 1
- I. The Permanent Settlement in Bengal
 - II. The Deccan Riots Commission
 - III. The Santhal Rebellion
 - IV. The Fifth Report by a Select Committee.
- Options:**
- A. I, II, III & IV
 - B. II, III, IV & I
 - C. III, II, I & IV
 - D. I, IV, III & II
18. **Which one of the following was the Gandhi's main demands for the peasants in Champaran?** 1
- A. Increase in minimum wages of workers
 - B. Freedom to cultivate the crops of their choice.
 - C. Reduction in government taxes for social classes
 - D. Indian education for all farmers' children
19. **Complete the following with the correct option regarding the role of leaders in the history of nationalism of their respective countries.** 1
- Ho Chi Minh: Vietnam, George Washington: -----
- A. USA
 - B. UK
 - C. France
 - D. Canada



20 Identify the ruler of India in the 1850s from the given options using the provided information. 1

- I. He was the successor to Peshwa Baji Rao II

II. He was compelled by sepoys and the towns people to join the revolt as their leader from Kanpur.

- A. Nana Sahib
- B. Kunwar Singh
- C. Birjis Qadr
- D. Maulvi Ahmadullah Shah

21. Which of the following were the key ideals associated with the social struggles in India since the nineteenth century? 1

- A. Autonomy, hierarchy, and traditionalism
- B. Democracy, equality, and justice
- C. Imperialism, colonialism, and bureaucracy
- D. Monarchy, privilege, and conservatism

SECTION B
SHORT ANSWER TYPE QUESTIONS (6 x 3 =18)

22 A. Analyse the layout of Harappan cities to identify features that promoted cleanliness and public health. 3

OR

B. Examine the challenges historians face in deciphering the Harappan script. 3

23 How does the Mahabharata show the multicultural nature of ancient Indian society? Explain with examples. 3

24 A. Examine the impact of Bhakti and Sufi poetry on the development of regional languages and literature. 3

OR

B. Examine how music and devotional songs in Bhakti and Sufi traditions serve spiritual expression and community unity. 3

25. Explain the term "Little Republics" as applied to villages during the Mughal period. 3

26. Describe the aspirations and objectives of the rebels during the Indian Rebellion of 1857, as reflected in their proclamations and actions. 3

SECTION C
LONG ANSWER TYPE QUESTIONS (3 x 8 =24)

28. A. How did the philosophical and religious developments during the first millennium BCE in India influence the socio-political aspects? Explain with examples. 8

OR

- B. How did the construction of stupas contribute to the spread of Buddhist teachings? Explain with examples 8
29. A. 'Vijayanagar empire was characterised by a distinctive architecture and building styles.' Justify the statement. Justify the statement. 8

OR

- B. 'The establishment of the Vijayanagar Empire considered significant in the history of the Indian subcontinent'. Justify the statement. 8
30. A How did the Constituent Assembly address the issue of social justice, particularly concerning the rights of the people? Explain. 8

OR

- B. Explain the distribution of powers between the Centre and the States, as debated in the Constituent Assembly, highlighting differing viewpoints and concerns. 8

SECTION D
SOURCE BASED QUESTIONS (3 x 4 = 12)

31. Read the following source carefully and answer the questions that follow: 1+1+2
=4

Inscriptions

Inscriptions are writings engraved on hard surfaces such as stone, metal, or pottery. They usually record the achievements, activities, or ideas of those who commissioned them and include the exploits of kings, or donations made by women and men to religious institutions. Inscriptions are virtually permanent records, some of which carry dates. Others are dated on the basis of palaeography or styles of writing, with a fair amount of precision. For instance, in c. 250 BCE the letter "a" was written like this: By c. 500 CE, it was written like this: The earliest inscriptions were in Prakrit, a name for languages used by ordinary people. Names of rulers such as Ajatasattu and Asoka, known from Prakrit texts and inscriptions, have been spelt in their Prakrit forms in this chapter. You will also find terms in languages such as Pali, Tamil, and Sanskrit, which too were used to write inscriptions and texts. It is possible that people spoke in other languages as well, even though these were not used for writing.

- I. What role does palaeography play in determining the age of inscriptions?
- II. How do inscriptions contribute to our understanding of ancient societies and cultures?
- III. What insights can be gained from studying the languages used in inscriptions across different regions and time periods?

32 Read the following source carefully and answer the questions that follow:

1+1+2
=4

Translating texts, sharing ideas

Translating texts, sharing ideas Al-Biruni's expertise in several languages allowed him to compare languages and translate texts. He translated several Sanskrit works, including Patanjali's work on grammar, into Arabic. For his Brahmana friends, he translated the works of Euclid (a Greek mathematician) into Sanskrit.

- I. Analyse the advantage Al-Biruni gained from his expertise in multiple languages?
- II. Analyse the significance of Al-Biruni translating Patanjali's work on grammar into Arabic?
- III How did Al-Biruni's translations contribute to the mutual understanding and appreciation between Islamic and Indian civilizations?

33. Read the following source carefully and answer the questions that follow:

1+1+2
=4

Why was salt the symbol of protest?

This is what Mahatma Gandhi wrote: The volume of information being gained daily shows how wickedly the salt tax has been designed. In order to prevent the use of salt that has not paid the tax, which is at times even fourteen times its value, the Government destroys the salt it cannot sell profitably. Thus, it taxes the nation's vital necessity; it prevents the public from manufacturing it and destroys what nature manufactures without effort. No adjective is strong enough for characterising this wicked dog-in-the-manger policy. From various sources I hear tales of such wanton destruction of the nation's property in all parts of India. Maunds if not tons of salt are said to be destroyed on the Konkan coast. The same tale comes from Dandi. Wherever there is likelihood of natural salt being taken away by the people living in the neighbourhood of such areas for their personal use, salt officers are posted for the sole purpose of carrying on destruction. Thus, valuable national property is destroyed at national expense and salt taken out of the mouths of the people. The salt monopoly is thus a fourfold curse. It deprives the people of a valuable easy village industry, involves wanton destruction of property that nature produces in abundance, the destruction itself means more national expenditure, and fourthly, to crown this folly, an unheard-of tax of more than 1,000 per cent is exacted from a starving people. This tax has remained so long because of the apathy of the general public. Now that it is sufficiently roused, the tax has to go. How soon it will be abolished depends upon the strength the people.

- I. What does Gandhi's reference to the "power of peace and non-violence" suggest about his strategic approach to resistance against British colonial rule?
- II. What parallels can be drawn between Gandhi's critique of the salt tax and broader movements for social justice and human rights?
- III. How does Gandhi's reference to the destruction of salt by the government shed light on the broader implications of colonial policies on India's natural resources?



SECTION E
Map Based Question

**(1 x 5
= 5)**

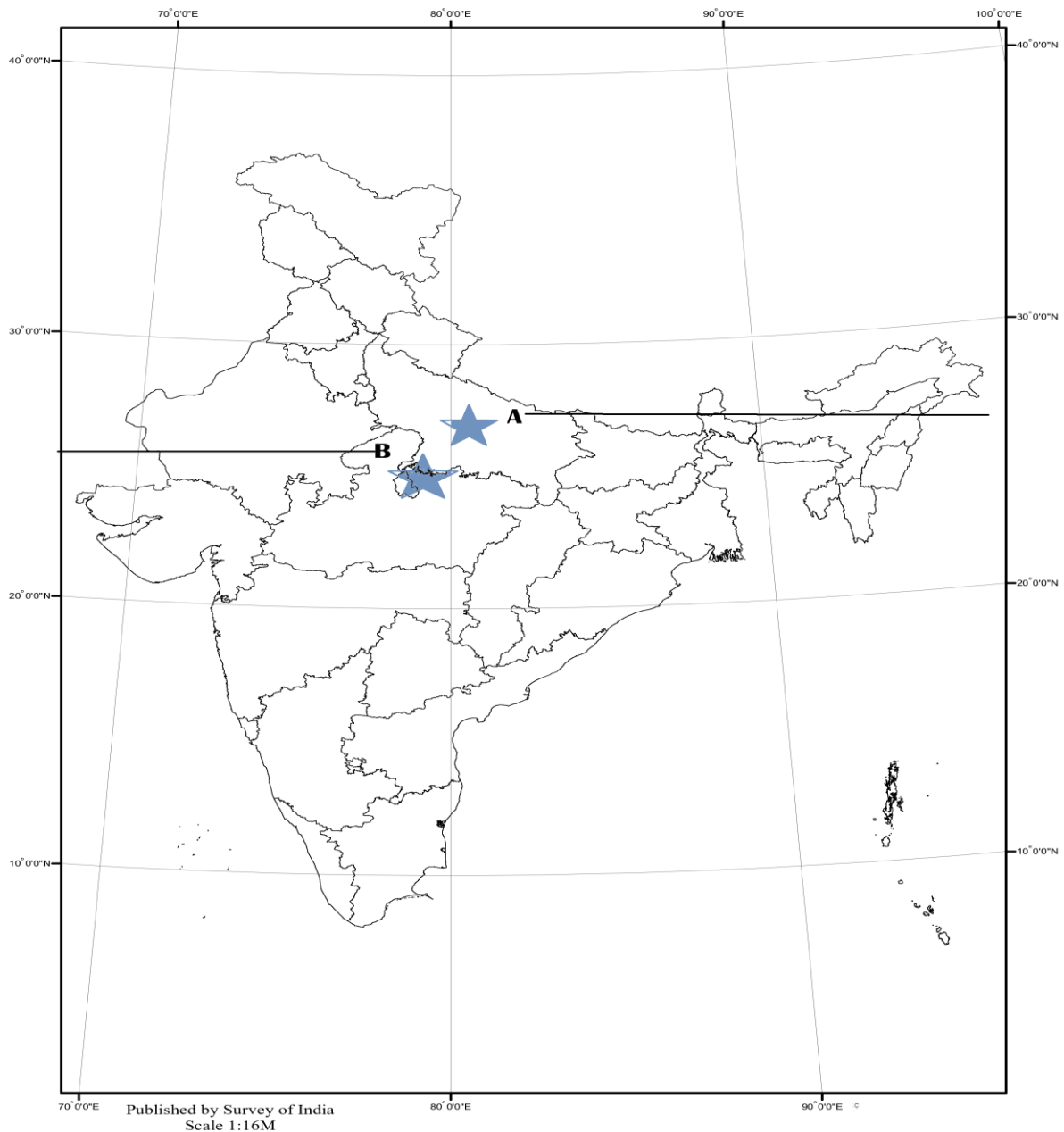
34 (34.1) On the given political map of India, locate and label the following with appropriate symbols:

- | | |
|---|---|
| I. Sanchi– A Stupa | 1 |
| II. Kalibanga - Indus Valley Site | 1 |
| III. (a) Panipat-Territory Under the Control of Mughals | 1 |

OR

(b)Vijayanagar- Capital of Vijayanagar empire

(34.2) On the same outline map, two places have been marked as 'A and B, as the centres of the Revolt of 1857 Identify them and write their correct names on the lines drawn near them. 2



Note: The following questions are for the Visually Impaired Candidates only in lieu of Q.No.34

- A. Mention any two Buddhist sites in the central India. 2
- B. (I) Mention any one Territory under Mughal empire. 1
- OR**
- (II) Name the capital of Vijayanagar empire. 2
- C. Mention any two centres of the Revolt of 1857



HISTORY (027)
Class XII 2024-25
MARKING SCHEME

Time Allowed: 3hrs

Maximum Marks:80

	SECTION – A	21x1=21
	OBJECTIVE TYPE QUESTIONS	
1.	ANS- C- It witnessed the flourishing collection of ancient Tamil literature.	1
2.	ANS-B-Satvahana	1
3.	ANS-A- Both (A) and (R) are correct and (R)is the correct explanation of (A)	1
4.	ANS-C-I&II	1
5.	ANS- D. a- (ii) b- (iii) c- (i) d- (iv)	1
6.	ANS-D -Rudradaman	1
7.	ANS-A- Ajanta Cave Paintings NOTE: The following question is only for the visually impaired candidate in lieu of Q7 ANS- B-Maharashtra	1 1
8.	ANS-B-Fluency in multiple languages and a broad intellectual curiosity.	1
9.	ANS- B. Andal was a woman Nayanar, she incorporated the prevailing caste system in the society.	1
10.	ANS- D. An imperial decree granting land or privileges to a sacred organization.	1
11.	ANS- D. a-(ii) b- (i) c- (iv) d- (iii)	1
12.	ANS-B- The opening of the new world through voyages.	1
13.	ANS- B-By providing information on administrative and cultural traditions.	1
14.	ANS- B- The dominance of state-controlled resources and limitations on private property.	1
15.	ANS-B- India's cotton production increased while the United States experienced a decline.	1
16.	ANS-B- Due to the displacement of Nawab Wajid Ali Shah and taluqdars	1
17.	ANS- D. I, IV,III & II	1
18.	ANS- B-Freedom to cultivate the crops of their choice	1
19.	ANS-A-USA	1
20.	ANSWER- A.Nana Sahib	1



21.	ANS-B -Democracy, equality, and justice	1
	SECTION B SHORT ANSWER TYPE QUESTIONS	6 x 3 =18
22	<p>A. Every house was connected to the street drains.</p> <p>i. The main channels were made of bricks set in mortar were covered with loose bricks that could be removed for cleaning.</p> <p>ii. In some cases, limestone was used for the covers.</p> <p>iii. House drains first emptied into a sump or cesspit into which solid matter settled while wastewater flowed out into the street drains.</p> <p>iv. Very long drainage channels were provided at intervals with sumps for cleaning.</p> <p>v. Any other relevant point</p> <p>Any three points to be explained.</p>	3
	OR	
	<p>B.</p> <p>i. Historians have called the Harappans script as enigmatic.</p> <p>ii. They have found that Harappan inscriptions are short, the longest containing about 26 signs.</p> <p>iii. Although the script remains un deciphered to date, it was evidently not alphabetical but syllable.</p> <p>iv. It has just too many signs –somewhere between 375 and 400.</p> <p>v. The script was written from right to left as some seals show a wider spacing on the right and cramping on the left, as if the engraver began working from the right and then ran out of space.</p> <p>vi. Any other relevant point</p> <p>Any three points to be explained.</p>	3
23	<p>i.The Mahabharata incorporates stories, customs, and beliefs from various regions of the Indian subcontinent, reflecting the multicultural aspects of ancient Indian society where different communities coexisted and interacted.</p> <p>ii.Variations in social practices, such as marriage and rituals, as depicted in the Mahabharata, highlight the dynamic nature of Indian society like polyandry, polygamy, exogamy, endogamy, etc.</p> <p>iii.The epic illustrates the ongoing exchange between diverse communities, including Brahmanas, Kshatriyas, Vaishyas, and Shudras, as well as interactions with tribal groups and other cultures. Ex – Hidimba, mlechchas, etc</p> <p>iv.These interactions enriched Indian society through the exchange of ideas and cultural practices.</p> <p>v.The Mahabharata portrays conflicts and consensus among different social groups and ideologies.</p> <p>vi.Communities adapted the epic to their cultural contexts, leading to diverse versions and interpretations. Like V S Suthankar’s preparation of critical edition.</p> <p>vii.Any other relevant point</p> <p>Any three points to be explained.</p>	3
24	<p>A.</p> <p>i. Bhakti and Sufi poets composed their verses in vernacular languages.</p> <p>ii. This helped in the standardization and development of various regional languages such as Hindi, Bengali, Punjabi, Urdu, and others.</p>	3

	<div><div><div>iii. Both Bhakti and Sufi movements emphasized the universality of love, devotion, and spiritual experience, transcending linguistic, cultural, and religious boundaries.</div><div>iv. Nayanar Alvars , Tamil Bhakti Tradition composed hymns praising Lord Shiva in Tamil. Their poems, Tevaram, and Naliyaradivya Prabhandham are revered for their devotional fervor and literary excellence.</div><div>v. Sufi Poetry, wrote verses expressing the depths of mystical love and spiritual longing.</div><div>vi. the Chishtis, particularly in Delhi, embraced the use of local languages like Hindavi to communicate with the common people, fostering a deeper connection with the masses.</div><div>vii. Sufi saints like Baba Farid expressed their spiritual insights through verses composed in the local language, some of which were included in the Guru Granth Sahib, the holy scripture of Sikhism.</div><div>viii. Others, like Malik Muhammad Jayasi, utilized local languages to create allegorical love stories such as the Padmavat, symbolizing the journey of the soul towards divine love.</div><div>ix. In Bijapur, Karnataka, Chishti Sufis crafted short poems in Dakhani.</div><div>x. The lingayat vachanas of Kannada and the abhangs of Marathi saints from Pandharpur.</div><div>xi. Guru Nanak Dev, Sikhism, composed hymns known as "Shabads" that are included in the Guru Granth Sahib. His verses convey messages of universal love, equality, and devotion to the divine.</div><div>xii. Kabir, a mystic poet and saint, challenged social norms and religious dogmas through his verses in sant bhasha</div><div>xiii. Mirabai composed bhajans and poems expressing her unconditional love and longing for the divine.</div><div>xiv. Any other relevant point</div></div><div><div>Any three points to be explained.</div></div></div>	
	<div><div>OR</div><div><div>B.</div><div><div>i. The poems of Appar, Sambandar and Sundarar form the Tevaram, a collection that was compiled and classified in the tenth century on the basis of the music of the songs.</div><div>ii. These kings introduced the singing of Tamil Shaiva hymns in the temples under royal patronage, taking the initiative to collect and organise them into a text (Tevaram).</div><div>iii. Sufi's ziyarat is the use of music and dance including mystical chants performed by specially trained musicians or qawwals to evoke divine ecstasy.</div><div>iv. The Sufis remember God either by reciting the zikr (the Divine Names) or evoking His Presence through sama'(literally, "audition") or performance of mystical music. Sama' was integral to the Chishtis, and exemplified interaction with indigenous</div><div>v. devotional traditions.</div><div>vi. The message of Baba Guru Nanak is spelt out in his hymns and teachings. These suggest that he advocated a form of nirguna bhakti.</div><div>vii. The fifth preceptor, Guru Arjan, compiled Baba Guru Nanak's hymns along with those of his four successors and other religious poets like Baba Farid, Ravidas (also known as Raidas) and Kabir in the Adi Granth Sahib. These hymns, called "gurbani", are composed in various languages.</div><div>viii. Any other relevant point</div></div><div><div>Any three points to be explained.</div></div></div></div>	3

25.	<ul style="list-style-type: none"> i. There was individual ownership of assets and deep inequities based on caste and gender distinctions. ii. A group of powerful individuals decided the affairs of the village, exploited the weaker sections and had the authority to dispense justice. iii. More importantly, a cash nexus had already developed through trade between villages and towns. iv. In the Mughal heartland too, revenue was assessed and collected in cash. Artisans producing for the export market (for example, weavers) received their advances or wages in cash, as did producers of commercial products like cotton, silk or indigo. v. Any other relevant point <p>Any three points to be explained.</p>	3
26.	<p>Describe the aspirations and objectives of the rebels during the Indian Rebellion of 1857, as reflected in their proclamations and actions?</p> <ul style="list-style-type: none"> i. The proclamations condemned the British for the annexations they had carried out and the treaties they had broken. ii. Condemned British land revenue settlements. iii. Every aspect of British rule was attacked and the firangi accused of destroying a way of life that was familiar and cherished. iv. The rebels wanted to restore that world. v. The proclamations expressed the widespread fear that the British were bent on destroying the caste and religions of Hindus and Muslims and converting them to Christianity. vi. People were urged to come together and fight to save their livelihood, their faith, their honour, their identity – a fight which was for the “greater public good”. vii. The proclamations sought to unify all social groups in the fight against firangi raj. viii. Azamgarh proclamation ix. Sepoy grievances like religious objections to the Enfield rifle cartridges, poor service conditions, and racial discrimination by British officers x. Any other relevant point <p>Any three points to be explained.</p>	3
27.	<ul style="list-style-type: none"> i. During the late eighteenth century, while many zamindars faced crises, a group of affluent peasants, known as jotedars, were consolidating their power in rural villages. ii. Jotedars, had amassed extensive landholdings, sometimes spanning several thousand acres. iii. Jotedars wielded significant influence over local trade and moneylending, exerting immense control over poorer cultivators in the region. iv. A substantial portion of jotedars' land was cultivated through sharecroppers (adhiyars or bargadars), who worked the fields with their own tools and surrendered half the produce to the jotedars after harvest. v. Unlike zamindars who often resided in urban areas, jotedars were situated in villages, allowing them direct control over a significant portion of the rural population. vi. Jotedars fiercely resisted attempts by zamindars to increase village revenue, obstructed zamindari officials, mobilized dependent ryots, and deliberately delayed revenue payments to zamindars. vii. In instances where zamindars' estates were auctioned due to revenue default, jotedars frequently became purchasers, further consolidating their authority. 	3



	<p>viii. Jotedars were particularly influential in North Bengal, although similar affluent peasants and village headmen were emerging in other parts of Bengal, known by different names such as haoladars, gantidars, or mandals.</p> <p>ix. The rise of jotedars inevitably weakened zamindari authority, shifting power dynamics in rural Bengal.</p> <p>x. Any other relevant point</p> <p>Any three points to be explained.</p>	
—	<p style="text-align: center;">SECTION -C</p> <p style="text-align: center;">LONG ANSWER TYPE QUESTIONS</p>	3 x 8 =24
28.	<p>A.</p> <p>i. The emergence of influential thinkers such as Zarathustra in Iran, Kong Zi in China, Socrates, Plato, and Aristotle in Greece, and Mahavira and Gautama Buddha in India marked a period of deep philosophical inquiry into the mysteries of existence.</p> <p>ii. Relationship between humans and the cosmic order were discussed.</p> <p>iii. New kingdoms and cities were developing, and social and economic life was undergoing significant changes in the Ganga valley.</p> <p>iv. Prompting these thinkers to also contemplate these societal transformations.</p> <p>v. Pre-existing traditions, including the early Vedic tradition as known from the Rigveda involved hymns praising deities like Agni, Indra, and Soma, often chanted during sacrifices where people prayed for various blessings such as cattle, sons and good health.</p> <p>vi. Sacrifices were collective affairs, but later some were performed individually by household heads for the well-being of their families.</p> <p>vii. More elaborate rituals like the rajasuya and ashvamedha were conducted by chiefs and kings, with Brahmana priests overseeing the ceremonies.</p> <p>viii. The Upanishads reflect a growing curiosity about the meaning of life, the possibility of life after death, and other profound existential inquiries.</p> <p>ix. These texts delve into metaphysical concepts and explore the nature of reality and human consciousness.</p> <p>x. Mahavira and the Buddha emphasised individual agency – suggesting that men and women could strive to attain liberation from the trials and tribulations of worldly existence.</p> <p>xi. Any other relevant point</p> <p>Any eight points to be explained.</p>	8
	OR	
	<p>B.</p> <p>i. Stupas were constructed at sites considered sacred due to their association with the Buddha's life events or relics.</p> <p>ii. For example, stupas were built at Bodh Gaya, where the Buddha attained enlightenment, and Sarnath, where he delivered his first sermon.</p> <p>iii. These sacred sites became centers of pilgrimage for Buddhists, drawing devotees from distant regions.</p> <p>iv. Stupas often featured carvings, reliefs, or inscriptions depicting scenes from the life of the Buddha.</p> <p>v. Stupas contained Jataka tales.</p> <p>vi. Sanchi identify it as a scene from</p> <p>vii. The Vessantara Jataka stories of the Buddha's past lives, and important events in Buddhist history.</p>	8

	<ul style="list-style-type: none"> viii. These artistic representations served as visual narratives that conveyed Buddhist teachings to illiterate audiences. For example, the carvings on the at Sanchi like Wheels, Tree, Shailbhanjhika, Gajalakshmi, Serpents, etc. ix. The architectural elements of stupas, such as dome representing the the Buddha's enlightenment, and principles. x. Worshippers entered through the eastern gateway and walked around the mound in a clockwise direction keeping the mound on the right, imitating the sun's course through the sky. xi. Sanchi, Amaravati, and Shahji-ki-Dheri xii. Any other relevant point <p>Any eight points to be explained.</p>	
29.	<p>A.</p> <ul style="list-style-type: none"> i. The city of Vijayanagara was enclosed by massive fortress walls, constructed without mortar or cementing agents, comprised several lines of forts encircling the city, agricultural hinterland, and forests. ii. Hiriya Canal, built by the kings of the Sangama dynasty, drew water from a dam across the Tungabhadra River and irrigated the cultivated valley separating the sacred center from the urban core. iii. Kamalapuram Tank highlighted the city's water management system. iv. Royal Centre included over 60 temples and around thirty building complexes identified as palaces. v. Mahanavami Dibba was a high platform with slots for wooden pillars, possibly used for royal gatherings or ceremonies. The "mahanavami dibba" was a massive platform associated with rituals during the Mahanavami festival. It featured relief carvings and may have supported a wooden structure. vi. Lotus Mahal, located in the royal center may have served as a council chamber or meeting place for the king and his advisers. vii. Hazara Rama Temple is believed to have been used exclusively by the king and his family. Though the central shrine's images are missing, the sculpted panels on the walls depict scenes from the Ramayana, offering insights into the royal patronage of temple construction. viii. Virupaksa Temple of Virupaksa and pampadevi underwent significant enlargement during the Vijayanagar Empire. Krishnadeva Raya added a hall in front of the main shrine, adorned with delicately carved pillars, and constructed the eastern gopuram. ix. Vitthala Temple featured various halls used for different purposes, including hosting special programs of music, dance, and drama, celebrating divine weddings. x. Nagalapuram xi. Any other relevant point <p>Any eight points to be explained.</p>	8
	OR	
	<p>B. The Vijayanagara Empire flourished as a diverse cultural, linguistic, and religious traditions.</p> <ul style="list-style-type: none"> i. It fostered a climate of cultural synthesis. ii. The empire's architectural marvels, such as temples, palaces, and fortifications, reflected a blend of indigenous Dravidian styles with influences from neighbouring regions. iii. the Vijayanagar Empire controlled trade routes and attracted merchants from across the Indian Ocean region. iv. Its strategic location facilitated trade with Arab, Persian, and European merchants, contributing to its economic prosperity. 	8

	<ul style="list-style-type: none">v. The empire's control over vital trade routes and access to precious commodities such as horses, spices, textiles, and precious stones.vi. Within the polity, claimants to power included members of the ruling lineage as well as military commanders.vii. Their rule was characterised by expansion and consolidation.viii. They acquired Orissa and the Sultan of Bijapurix. The kingdom remained in a constant state of military preparedness,x. It flourished under conditions of unparalleled peace and prosperity.xi. Krishnadeva Raya is credited with building some fine temples and adding impressive gopurams to many important south Indian temples.xii. He also founded a suburban township near Vijayanagara called Nagalapuram .xiii. Their fortifications surrounding the capital city, provided defence against external threats, ensuring the empire's territorial integrity and sovereignty.xiv. The Vijayanagar period witnessed a golden age of literature in languages such as Sanskrit, Kannada, Telugu, and Tamil, with prolific literary works, poetic compositions, and scholarly treatises produced during this era.xv. urban core with well-planned layouts, extensive irrigation networksxvi. their water management systems left a lasting legacy in the region.xvii. Rayas and nayaks their political innovation.xviii. The empire's architectural achievements like Royal Centre, Mahanavami Dibba, etcxix. Their Temple architecture, Virupaksha , Vitthala and Hazara Ram Temples.xx. Any other relevant point <p>Any eight points to be explained.</p>	
30.	<p>A.</p> <ul style="list-style-type: none">i. Different demands were made by the members of the Constituent Assembly concerning the rights of the people.ii. These demands, ideas, opinions were debated, discussed and conflicting idea were reconciled and then consensus was made to take collective decision.iii. Intense debate took place in assembly on the issue.iv. B. Pocker Bahadur gave powerful presentation for continuation minorities representation in the political system and in governance of the country.v. Sardar Patel strongly declared that separate electorate was a poison.vi. GB Pant said that all should empathise with the aspirations of people.vii. All these arguments were based on the unity of nation, where every individual is a citizen of a state, and each group had to be assimilated within the nation.viii. The Constitution will grant citizenship and rights, and in return citizens had to offer their loyalty to the state.ix. Communities could be recognized as cultural entities and. politically members of all communities are equal to the member of the state.x. NG Ranga welcomed all legal and civil rights granted by the constitution to its citizen but said these rights can only be enjoyed when suitable conditions or opportunities are provided.xi. Ranga also talked about huge gap between the masses of India and their representatives in the assembly.xii. Jaipal Singh a representative, a tribal, spoke about the need to protect the tribes and to make provisions that would help them come to the level of the general population.xiii. Any other relevant point <p>Any eight points to be explained.</p>	8

	OR	
	B. <ul style="list-style-type: none"> i. Issue of division of power of the government at the centre and at state level was intensely debated. ii. Draft constitution provided three lists of subject i.e. Union List-union government can make laws on it. State List, State government can make laws on it and Concurrent List-Both Union and State government can make laws on listed items. iii. More items are listed in Union list. iv. In India-Union government is made more powerful so that it can ensure peace, security, and can coordinate on the matter of vital interest and to speak for whole country in the international sphere. v. K Santhanam said reallocation of power was necessary, not only to strengthen the state but also the centre. vi. He said if centre is overburdened with responsibility, it could not function properly. So it is important that some powers to the state should be transferred. vii. He said states should be given appropriate fiscal provision so that they can work independently, and they do not need to depend on centre for even nominal expenditure. viii. The need for strong government had been further reinforced by the events of partition. Many leaders like Jawaharlal Nehru, BR Ambedkar, Gopalaswami Ayyangar etc advocated for strong centre. ix. Balakrishna Sharma, a member from the United Provinces, argued extensively that only a strong Centre could effectively plan for national welfare, mobilize economic resources, establish efficient administration, and defend against foreign threats. x. The Constitution exhibited a clear inclination towards the rights of the Union of India over those of its constituent states, reflecting a shift in priorities driven by the time. xi. Any other relevant point <p>Any eight points to be explained.</p>	8
	<p align="center">SECTION D</p> <p align="center">Source Based Questions</p>	3x4=12
31.	Read the following source carefully and answer the questions that follow:	
I	<ul style="list-style-type: none"> i. Palaeography helps scholars determine the age of inscriptions by analyzing the styles of writing used, allowing them to assign approximate dates based on changes in script over time. ii. Any other relevant point <p>Any one point to be mentioned.</p>	(1)
II	<ul style="list-style-type: none"> i. Inscriptions provide valuable insights into the achievements, activities, and beliefs of ancient societies and cultures. ii. helping historians reconstruct their history and social structures. iii. Any other relevant point <p>Any one point to be explained.</p>	(1)
III	<ul style="list-style-type: none"> i. Studying the languages used in inscriptions provides insights into cultural exchange, and linguistic evolution across different regions and time periods. ii. It enriches our understanding of historical dynamics. iii. Any other relevant point <p>Any two points to be explained.</p>	(2)

32 I	i. Al-Biruni's proficiency in several languages allowed him to compare languages and translate texts, facilitating cross-cultural exchange and the dissemination of knowledge across different regions. ii. Any other relevant point Any one point to be explained.	(1)
II	i. By translating Patanjali's work into Arabic, Al-Biruni contributed to the preservation and transmission of knowledge from Indian culture to the Islamic world. ii. Enriching the understanding of grammar and linguistic principles. iii. Any other relevant point Any one point to be explained.	1
III	i. Al-Biruni's translations fostered mutual understanding and appreciation between Islamic and Indian civilizations by facilitating the exchange of knowledge, ideas, and cultural practices. ii. This intellectual exchange enriched both traditions and promoted dialogue and cooperation between the two civilizations. iii. Any other relevant point Any two points to be explained.	2
33. I	i. Gandhi's mention of the "power of peace and non-violence" indicates his belief in the efficacy of nonviolent resistance to challenge and ultimately overcome British colonial oppression. ii. It reflects his strategic approach of using moral force to mobilize the masses and effect social and political change. iii. Any other relevant point Any one point to be explained.	1
II	i. Gandhi's critique of the salt tax resonates with broader movements for social justice and human rights by highlighting the systemic injustices embedded within oppressive structures of power. ii. It underscores the universal struggle against exploitation, discrimination, and inequality, emphasizing the importance of nonviolent resistance and collective action in challenging such injustices. iii. Any other relevant point Any one point to be explained.	1
III	i. Gandhi's reference to the destruction of salt by the government underscores the colonial exploitation of India's natural resources for profit and control. ii. It reflects a pattern of resource extraction that prioritized imperial interests over the well-being of the Indian populace, exacerbating socio-economic inequalities and hindering local development. iii. Any other relevant point Any two points to be explained.	2
	SECTION E Map Based Question	1x5=5
34	A. I. Sanchi– A Stupa II. Kalibanga - Indus Valley Site III. (a) Panipat-Territory Under the Control of Mughals OR (b) Vijayanagar- Capital of Vijayanagar empire PLEASE SEE ATTACHED MAP	1 1 1

